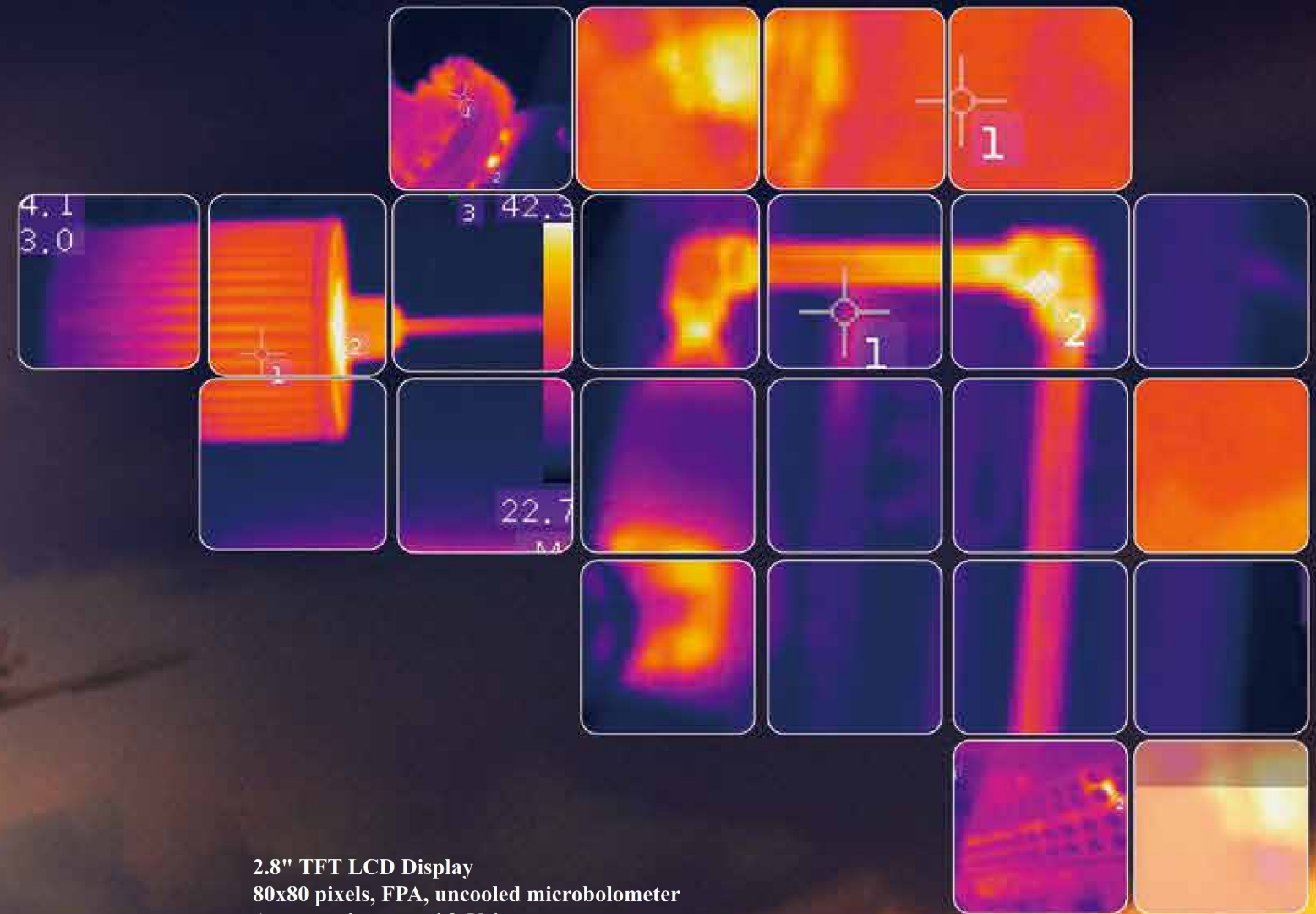






The Thermal Imager is designed for Non-contact detection and calculation of apparent surface temperature, fully radiometric imagers are ideal for troubleshooting electrical systems, electro-mechanical equipment, process equipment, HVAC/R equipment and others.



2.8" TFT LCD Display
80x80 pixels, FPA, uncooled microbolometer
Annotate images with Voice
Picture in Picture
32X Continuous Zoom
5 Megapixels Digital camera

HDMI High resolution video output
Built-in 100M Memory for 80 pictures or one minute video record
Wi-Fi connectivity
Transfers images and data to mobile devices to share reports and critical information quickly (983 only)

Professional InfraRed Thermometers with Dual Laser targeting

-  Fast response time 0.15 sec.
-  **1.0%** IR High Accuracy
Built-in Dual Laser Pointers focus target (calibrated distance) High accuracy(1.0%) measurement
-  **10000** IR High Sensitivity
Triple LCD display indicates Reading, Max reading and Functions at same time.
High contrast LCD with white backlight
-  **DOUBLE MOLDED** High Precision
Double molded housing design






8860B/8861B/8861/8862 Series compact Infrared Thermometers provide much faster and accurate readings for most surface temperature measurements.
Two laser points converge to a single spot when the unit is at the optimal distance from the object being measured (8861B/8861/8862).

Applications

- Plant/General Maintenance
- HVAC/R
- Transportation/Automotive
- Cooling and Reheating
- Serving areas
- Food service Equipment
- Cold storage

Worldwide Patent:
PCT/CN2012/082197

-  T-Sound
-  150ms faster sampling time
1% accuracy
-  Dual laser pointers



Model 8862MAX⁺



EMC
EN: 61326
EN: 60825-1

Key Benefits

- T-Sound: Changeable beeper indication by Temperature
- Green, Red & Blue backlight: Normal, Higher & Lower temperature indications



Model 8862 series



Model 8863/8865

Features

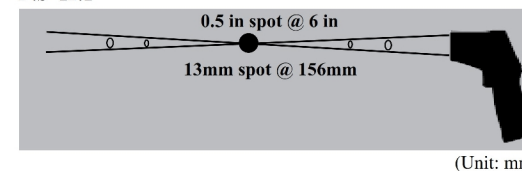
	8860B	8861B	8861	8862	8862MAX ⁺	8863	8865
User selectable °C or °F	*	*	*	*	*	*	*
Dual laser targeting	Single laser	*	*	*	*	*	*
Automatic Data Hold	*	*	*	*	*	*	*
Auto Power Off	*	*	*	*	*	*	*
White Backlit LCD Display	*	*	*	*	*	*	*
Overrange indication	*	*	*	*	*	*	*
Trigger lock for continuous use			*	*	*	*	*
Max display	*	*	*	*	*	*	*
High and low alarm			*	*	*	*	*
Adjustable emissivity			*	*	*	*	*
Optical Resolution	12:1	12:1	12:1	12:1	20:1	20:1	30:1
Green, Red & Blue backlight: Normal, Higher & Lower temperature indications					*	*	*
T-Sound: Changeable beeper indication by Temperature					*		

Specifications

	8860B	8861B	8861	8862/8862MAX ⁺	8863	8865
IR Temp. Range	-50°C to 450°C -58°F to 842°F	-50°C to 450°C -58°F to 842°F	-50°C to 550°C -58°F to 1022°F	-50°C to 650°C -58°F to 1202°F	-50°C to 800°C -58°F to 1472°F	-50°C to 1000°C -58°F to 1832°F
IR Temp. Resolution	0.1° up to 1000°, 1° over 1000°					
Emissivity	Fixed at 0.95			Adjustable 0.10-1.0		
Basic Accuracy	±1.0% of reading					
Response Time	Less than 150ms					
Spectral response	8-14µm					

Size(HxWxD): 146mm x 104mm x 43mm Accessories:
Weight: 163g 9V battery, Carrying case and Gift box.

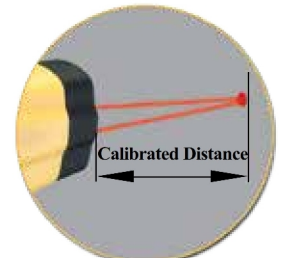
Distance (D) to Spot size(S)
D:S=12:1



(Unit: mm)



Triple LCD display with white backlight



Accurate Measurement



High Quality Lens & Dual laser pointers